



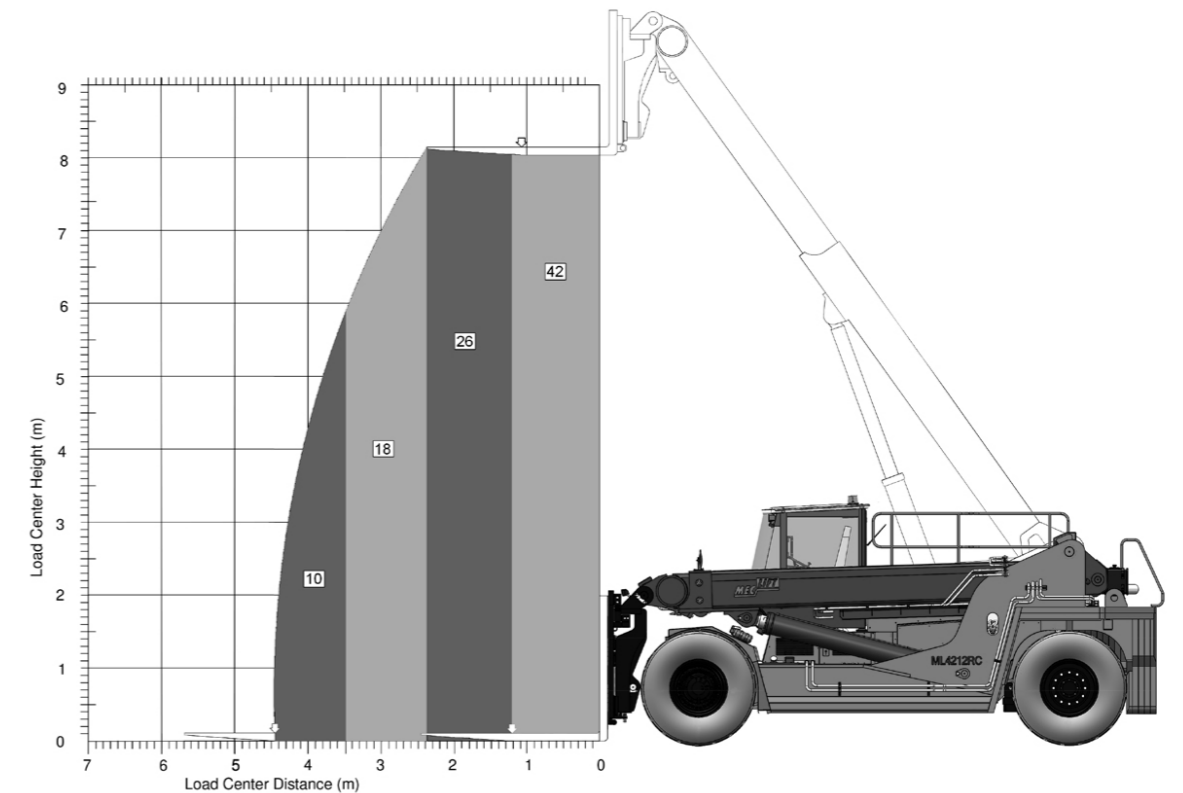
VARIABLE REACH TRUCK **ML4212RC**



**MULTIPURPOSE
MACHINE THAT
DELIVERS
IN EVERY SITUATION**



MECLIFT™ ML4212RC



VARIABLE REACH TRUCK

With Meclift™ ML4212RC variable reach truck, you can take your heavy lifting operations to the next level, on efficiency and safety.

ML4212RC is capable of lifting 42 tons with 1.2 m load center, it can reach up to 3.25 meters and taking the lifting height as high as 7.8 meters.

With high reaching capability, Meclift ML4212RC excels on loading and unloading materials to containers. It can reach to the end of a standard 20" container and still lift 10 tons, making all logistical maneuvers significantly easier and safer. Meclift™ ML4212RC variable reach truck, is designed to help on container loading and unloading, you can do all the heavy lifting into/out a container, that is located on top of the trailer. With Bogey rollers, you can move heavier loads than 10 tons, even while utilizing the maximum reach.

Meclift ML4212RC with the Lifting Beams is a unique combination for long and heavy object handling. With that, it is possible to place rods, pipes and tubes into middle of a 40ft container. There is no other machine in the world that do that. ML4212RC with fork mounted top lift spreader, can put 20 - 40ft laden containers on a trailer or on a flat wagon.

With vertically movable cabin, the driver can position him/herself on the right place, to see either the forks or surrounding areas, which ever is needed at the moment.



**MECLIFT HANDLES
YOUR CARGO SAFELY**



WWW.MECLIFT.FI

MECLIFT™ ML4212RC

| Manufacturer | Mecalift Oy, Finland |
|-----------------|-------------------------------------|
| Type | ML4212RC |
| Standard colors | Orange (RAL2004) and Blue (RAL5002) |

| Lifting properties | |
|--------------------|-----------|
| Lifting capacity | 42 000 kg |
| Load center | 1 200 mm |
| Lifting height | 7 800 mm |
| Reach | 3 250 mm |
| Lifting speed | 0.25 m/s |

| Dimensions | |
|------------------------------|------------------|
| Length (without attachments) | 7 800 mm |
| Width | 3 780 mm |
| Height (min) | 3 485 mm |
| Wheelbase | 5 000 mm |
| Ground clearance | 350 mm |
| Weight (without attachments) | 52 500 kg |
| Turning radius | 8 200 mm |
| Standard forks W x H x L | 300x140x2 400 mm |

| Technical specifications | |
|--------------------------|---|
| Power source | Diesel engine |
| Manufacturer | Cummins |
| Model | QSL 9 Stage III/ Tier 3 or L9 Tier 4F/ Stage /V |
| Power rating | ISO 2534 242@2100/242@1800 kW@rpm |
| Peak torque | 1424@1500 / 1526@1400Nm@rpm |
| Transmission | 5/3 speed automatic |
| Manufacturer | ZF |
| Model | WG 260 |
| Driving speed | 25 km/h |

| Drive axle | |
|---------------|---------------------|
| Manufacturer | Kessler |
| Model | D102PL341/528-NLB |
| Service brake | Hydraulic wet disc |
| Parking brake | Spring powered disc |

| Tyres | |
|-------|-------------|
| Front | 4x480/95R25 |
| Rear | 2x480/95R25 |

| Options | |
|---|--|
| - Lifting attachments, i.e. Adjustable Coil Ram, Coil Clamps, Double forks and Top Lift Spreader for laden containers | |
| - Other options available on request | |

MECLIFT

Mecalift Oy
Hammareninkatu 7
FI-33100 Tampere, Finland
Tel. +358 400 403 593
sales@meclift.fi
meclift.fi

